



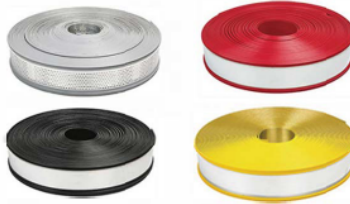
## CONSUMABLES AND TOOLS AND ACCESSORIES

### 3D Flex-Spex Rolls



**Width:** 5cm & 6cm  
**Length:** 100m /roll  
**Thickness:** 1mm  
**Type:** Side white pass light  
 Side black pass light  
 Bottom side pass light  
 Total pass light  
**Advantage:** bend by hand, without machine

### Flexi-Trim



**Width:** 80mm  
**Length:** 33m/roll  
**TYPE:** Aluminum core trim cap  
 Color steel core trim cap  
 Stainless steel core trim cap  
**Color:** silver, brush silver, brush gold  
 Mirror silver, mirror gold  
 Black/gray edge  
 White, black, yellow, green, red, blue

### EZ Shaper Set



**Voltage:** 110-240V  
**Power:** 60w (Round Bender) 39w (90° Bender)  
**Temperature:** 200°C + 5%  
**Round Bender Size:** 100mm x 50mm x 2  
**90° Bender Size:** 100mm x 2.5mm x 2  
**Time Needed**  
**Round Curve:** 2.5mm Thickness, indoor temp 90° About 9 Sec  
**90° Sharp Curve:** 2.5mm Thickness, indoor temp 90° About 9 Sec

## Flat Aluminum Coils

### Product



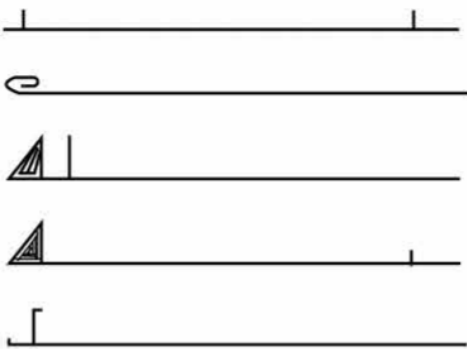
**Width:** 3cm, 4cm, 6cm, 7cm, 7.7cm, 9.7cm, 11.7cm  
**Thickness:** 0.6mm, 0.8mm, 1mm  
**Length:** 50m /roll

### Colors



### Aluminium Profiles

Suitable for NASH  
Channel Letter Benders



3m, 6m, 20m & 50m lengths

### Resin Color Swatches

